



Confectionery Products



The material matters in material handling



MFG Tray has been manufacturing confectionery-handling products for more than 40 years. Their strength, stability and durability ensure exceptional performance and value for confectionery operations.

The material matters in confectionery products handling.

MFG Tray confectionery products are molded from high-strength, glass-reinforced composites. The outstanding physical properties for which these products are known are a result of the synergy of resin matrix and glass reinforcement. Thanks to their strength, composite products may be readily stacked to save space and streamline handling and product storage. Inherent dimensional stability ensures easy integration into automated machinery. MFG Tray products are compression molded from our own sheet-molding compound (SMC), a process that is ideal for producing medium to high volumes of high-strength, complex parts.

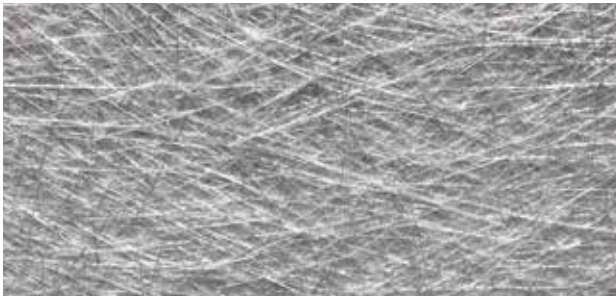
Composite trays and containers are safe for confectionery processing. All materials used in the construction of MFG Tray products are listed in NSF Standard No. 2 and in the USFDA Code of Federal Regulations, Title 21, of the Federal Register, Section 177.2420. MFG Tray starch trays have been independently tested and certified per European Commission Regulation (EU) No 10/2011 for overall migration.

Exceptional performance and durability

Thanks to their composite design, MFG Tray confectionery products offer inherent strength and weight-carrying capacity resulting in exceptional stacking capability under heavy loads. They are also ideal for machine integration and robotic applications, and can be used continuously in temperatures ranging from -60° to 250° F (-51° to 121° C). Unlike wood, they may be steam cleaned or washed in conventional machines. There are no sharp corners to trap starch or moisture residue.

Variety of sizes and configurations

MFG Tray manufactures ventilated drying trays, mogul starch trays, gum trays, holding and work-in-progress trays in a variety of designs and sizes to meet the specific needs of confectionery operations. Starch trays are compatible with NID, Makat, Winkler & Dunnebier and other moguls, offering uniform sizing and dimensional stability to accommodate increased mogul speeds for optimal throughput and efficiency. They are also interchangeable with wood trays and may be integrated into production lines using both materials.



Strength at the core. Fibers in MFG Tray products are multidirectional or random for optimal tensile and torsion strength of the finished part. Fiber lengths vary from 1" to 2". The composites can contain up to 35 percent of randomly oriented fibers by weight.



The advantages keep stacking up. MFG Tray starch trays readily integrate with a variety of moguls ensuring unprecedented durability, cleanability, and food product safety. Unlike wood trays, composite trays will not break in the event of a machine jam, eliminating the possibility of wood splinters in the end product. Several confectionery operations using MFG Tray starch trays have noted a resulting five to ten percent increase in production efficiency.



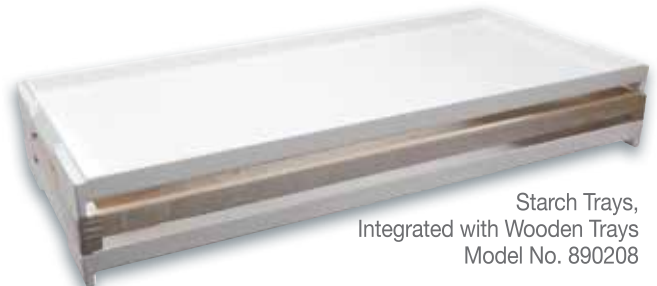
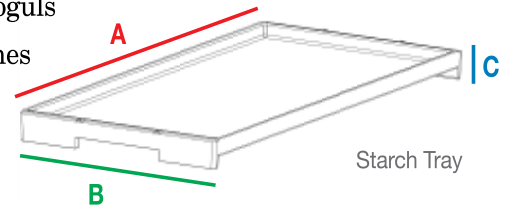
MOLDED FIBER GLASS TRAY
PH 814 683.4500 or 800 458.6050
FX 814 683.4504 www.mfgtray.com

Starch Trays

- Over 70 models offered and custom design available
- Expressly designed to integrate with all regular and jumbo-sized moguls
- Dimensional stability ensures compatibility with high-speed machines
- Contoured corners will not trap moisture or starch residue
- Integrates easily with wood trays
- Stack without sagging or warping



Other colors available upon request.



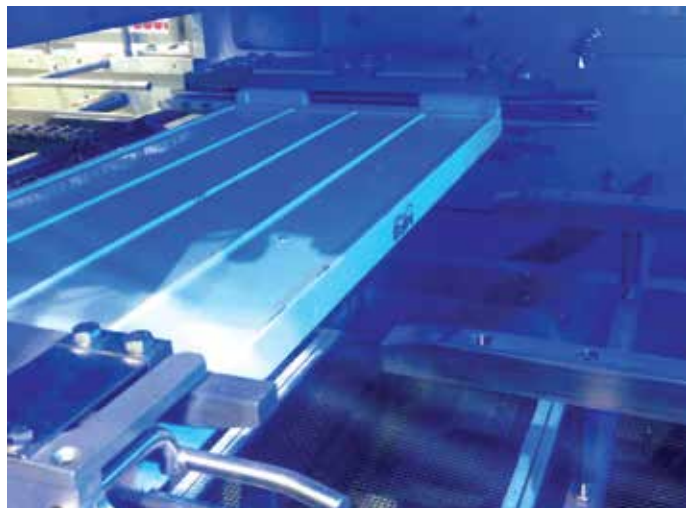
X-DTect™

The MFG Tray X-DTect™ is a patent pending composite material made from high-strength, glass-reinforced composites specifically formulated specifically for X-ray detection.

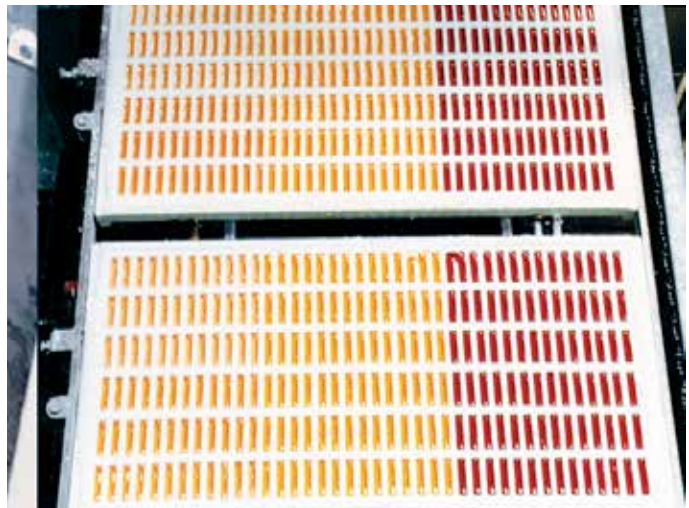
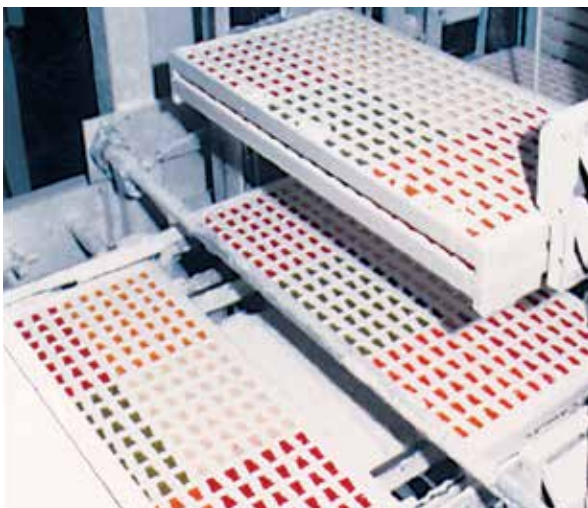
- Inherent fiberglass strength and durability
- Can be used continuously in temps ranging from -60° to 250° F (-51° to 121° C)
- Contaminant detection down to 1 cubic mm
- Product recall prevention and protection
- A "best practice" product quality assurance solution
- EEC Directives 2002/72/EC and amendments up to 2005/79/EC for global migration



The next "best practice". Protect your customers and your brand reputation with the frontline prevention that only MFG Tray can provide.



The above images are courtesy of Winkler and Dunnebier, Germany.



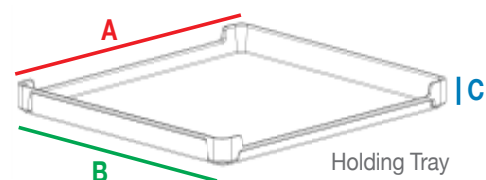
Dependable performance. The precise sizing and dimensional stability of MFG Tray starch trays contribute to improved mogul efficiency, and the durability of composite construction ensures value and a long service life. The trays are available in a range of sizes to accommodate a variety of starch depths.



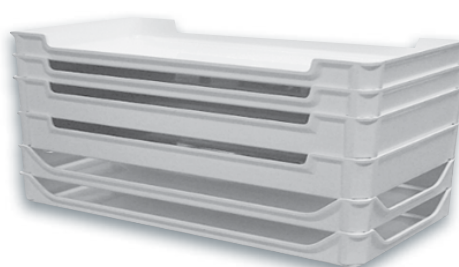
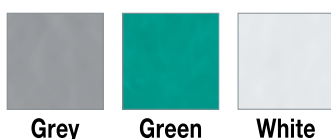
MOLDED FIBER GLASS TRAY
PH 814 683.4500 or 800 458.6050
FX 814 683.4504 www.mfgtray.com

Holding Trays

- Dropped sides and/or ends promote air circulation and thorough drying
- Stacking design eliminates the need for tray racks
- May be steam cleaned or machine washed



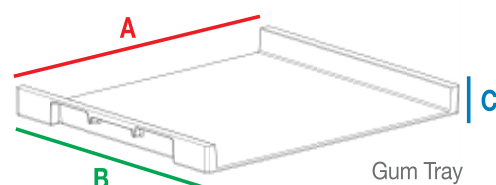
Product Name	Outside Top Dimensions (L x W x H)						Inside Bottom Dimensions (L x W x H)						Model No.
	A inches	A mm	B inches	B mm	C inches	C mm	A inches	A mm	B inches	B mm	C inches	C mm	
Tray with drop ends	24 1/4	616	24 1/4	616	2 1/4	57	23 1/4	591	23 1/4	591	2 1/8	54	630101
Tray with drop ends	32 3/4	832	24 3/4	629	1 1/2	38	31 5/8	803	22 1/2	572	1 3/8	35	633001
Tray with drop sides	24	610	12	305	2 3/4	70	23 1/8	587	11 1/8	283	2 3/4	70	634008
Tray with drop end	32	813	24	610	1 3/4	44	30	762	22 1/8	562	1 5/8	41	641008
Stacking Box, drop sides	30 3/8	772	15 7/8	403	2 7/8	73	29 7/8	759	15 1/8	384	2 5/8	67	805208
Stacking Box, drop sides	30 3/8	772	15 7/8	403	4 1/8	105	29 5/8	752	15 1/8	384	4	102	805308
Stacking Box, drop sides	30 3/8	772	15 7/8	403	3 5/8	92	29 5/8	752	15 1/8	384	3 1/2	89	805508
Stacking Box, drop sides	31 7/8	810	15	381	2	51	31	787	14 1/8	359	1 7/8	48	816001
Stacking Box, drop sides	35 3/4	908	19 3/4	502	3 3/4	95	34	864	17 7/8	454	3 1/2	89	894008
Standard Colors: Gray, Green, White													



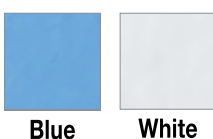
Model No. 805208, 805308 and 805508

Gum Trays

- Open sides promote air circulation and thorough drying
- Space-saving stacking design
- Contoured edges and corners eliminate trapped residue



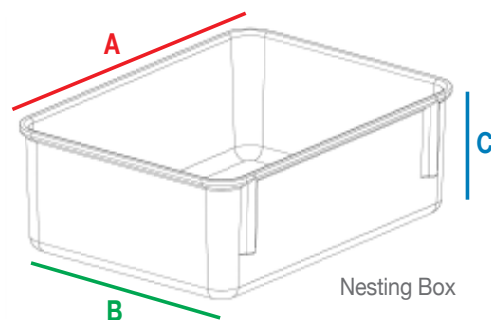
Product Name	Dimensions (L x W x H)						Model No.
	A inches	A mm	B inches	B mm	C inches	C mm	
Tray	22.20	564	19.02	483	1.88	48	830008
Tray	22.20	564	19.02	483	2.04	52	830108
Standard Colors: Blue, White							



Model No. 830108

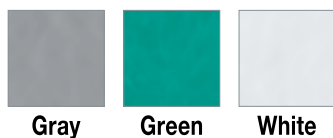
Stock Boxes

- Expressly designed for storing candy prior to packing
- Container lid provides an airtight seal to ensure freshness and sanitation
- Completely safe for freezing



Product Name	Outside Top Dimensions (L x W x H)						Model No.
	A inches	A mm	B inches	B mm	C inches	C mm	
Lid for 920108	11 3/4	298	8 3/4	222			920118
Nesting Box	6 1/8	156	4 7/8	124	2 1/8	54	921108
Lid for 921108	6 1/8	156	4 7/8	124			921118
Nesting Box	9 3/4	248	6 1/8	156	2 1/8	54	922108
Lid for 922108 & 926108	9 3/4	248	6 1/8	156			922118
Nesting Box	9 3/4	248	9 1/4	235	4 1/2	114	923108
Lid for 923108 & 924108	9 3/4	248	9 1/4	235			923118
Nesting Box	9 3/4	248	9 1/4	235	2 1/8	54	924108
Nesting Box	9 3/4	248	6 1/8	156	4 1/2	114	926108
Nesting Box	12 3/8	314	9 3/4	248	2 1/8	54	930108
Lid for 930108	12 3/8	314	9 3/4	248			930118
Nesting Box	11 3/8	289	9 1/4	235	3 1/8	86	940108
Lid for 940108	11 3/8	289	9 1/4	235			940118

Standard Colors: Gray, Green, White



Protection your products deserve. MFG Tray stock boxes with lids provide a tight seal to protect products and ensure freshness. Boxes may be stacked to save space and are completely safe for freezing.



MOLDED FIBER GLASS TRAY
 PH 814 683.4500 or 800 458.6050
 FX 814 683.4504 www.mfgtray.com

To learn more about
MFG Tray Confectionery Products
or to request a quote, please call
(814) 683-4500 or (800) 458-6050



MOLDED FIBER GLASS TRAY
6175 Route 6 • Linesville, PA 16424 USA

PH 814 683.4500 or 800 458.6050
FX 814 683.4504 www.mfgtray.com



A Molded Fiber Glass Company